

SPECIFICATIONS

Electrical

Current Rating: 1A AC, DC

Voltage Rating: 125V AC/ max.

Operating Temp.: -40°C ~ +85°C

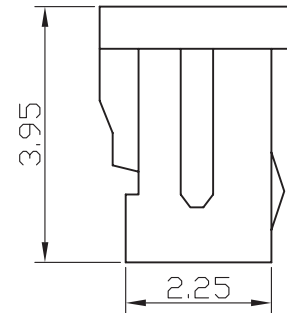
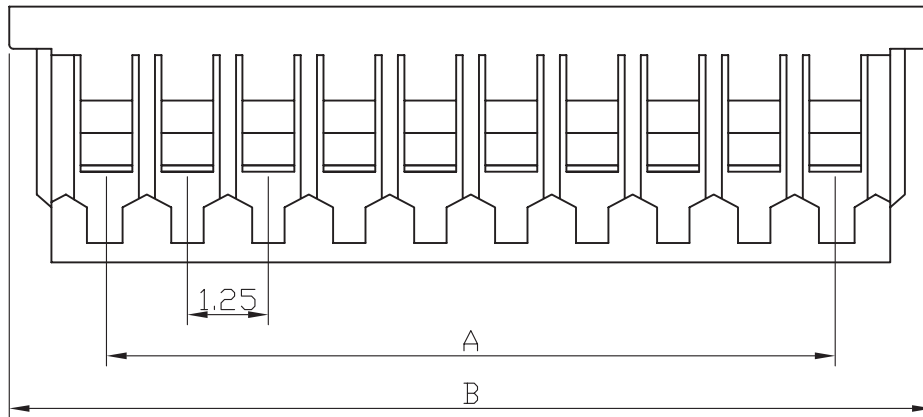
Insulation Resistance: 100M Ω / min.

Dielectric Withstanding Voltage: 250V AC/ min.

Contact Resistance: 20M Ω / max.

Material

Material: Nylon66, UL94V-0



| Poles | Dimension mm | |
|-------|--------------|-------|
| | A | B |
| 2 | 1.25 | 4.25 |
| 3 | 2.50 | 5.50 |
| 4 | 3.75 | 6.75 |
| 5 | 5.00 | 8.00 |
| 6 | 6.25 | 9.25 |
| 7 | 7.50 | 10.50 |
| 8 | 8.75 | 11.75 |
| 9 | 10.00 | 13.00 |
| 10 | 11.25 | 14.25 |
| 11 | 12.50 | 15.50 |
| 12 | 13.75 | 16.75 |
| 13 | 15.00 | 18.00 |
| 14 | 16.25 | 19.25 |
| 15 | 17.50 | 20.50 |

DESCRIPTION: 1.25mm Wire-to-Board Housing

TOLERANCES ARE

X, \pm
 .X \pm
 .XX \pm
 .XXX \pm
 ANG \pm