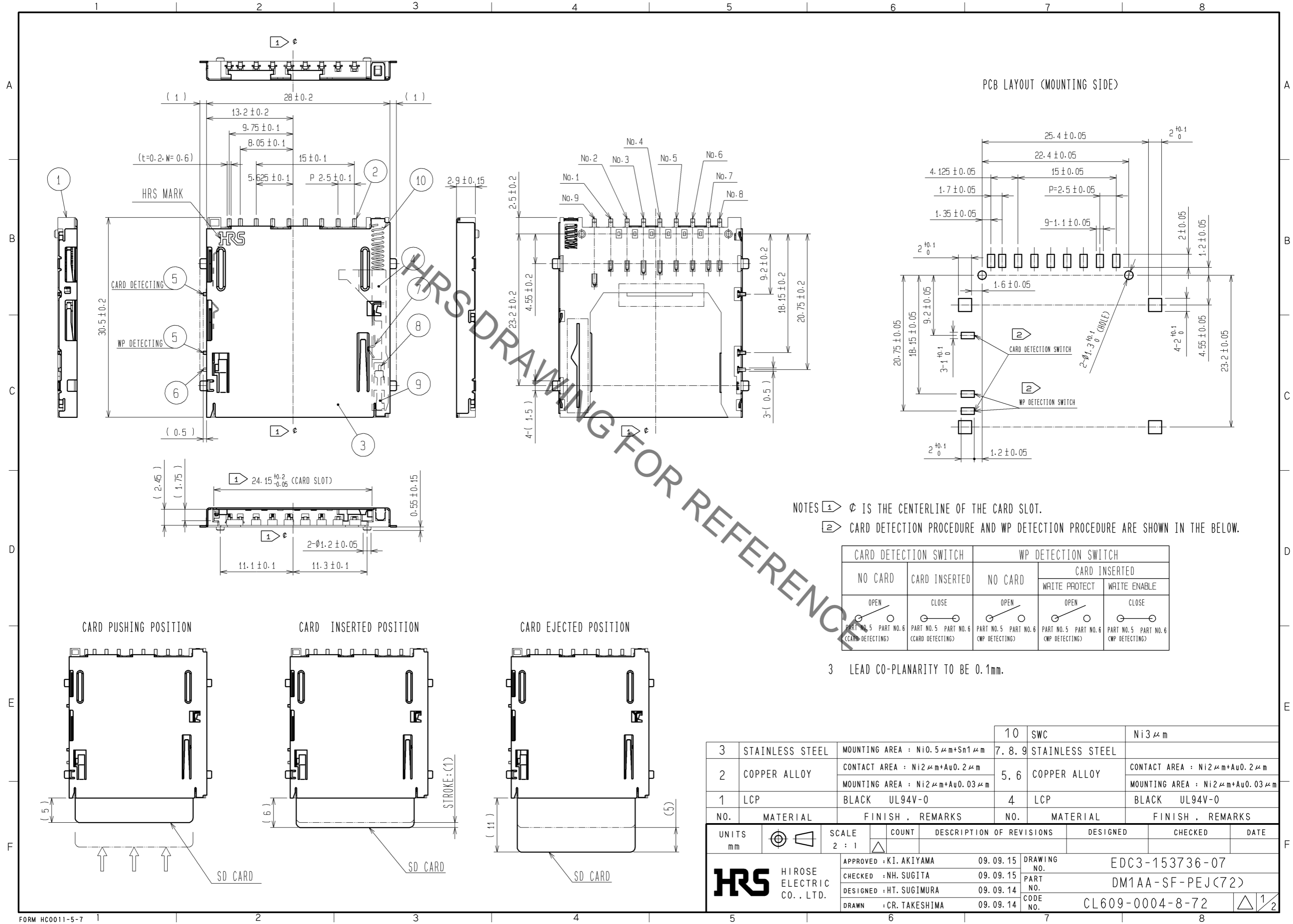


Mar.1.2021 Copyright 2021 HIROSE ELECTRIC CO., LTD. All Rights Reserved.
 In case of consideration for using Automotive equipment / device which demand high reliability, kindly contact our sales window correspondents.



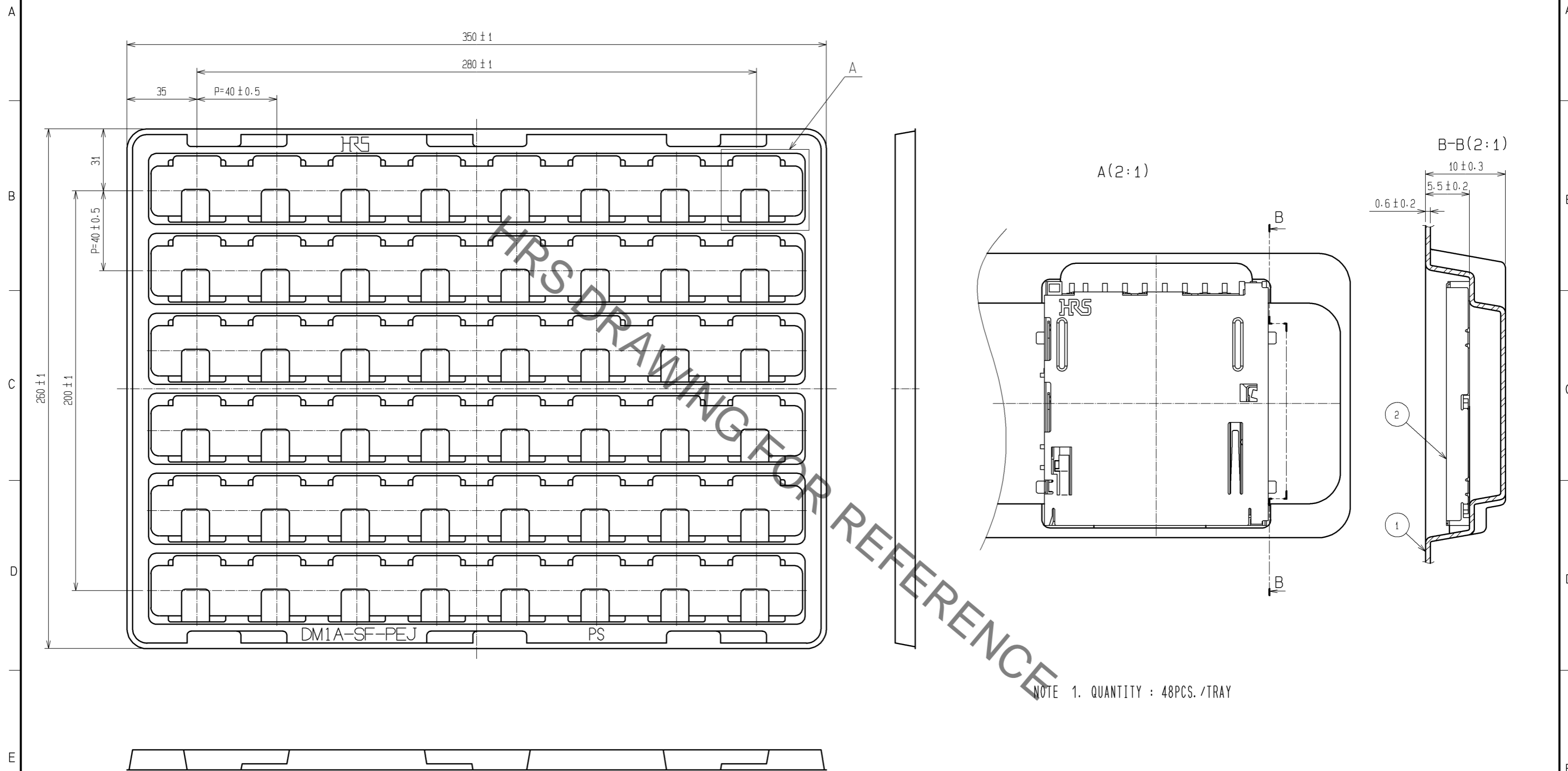
NO.	MATERIAL	FINISH . REMARKS	NO.	MATERIAL	FINISH . REMARKS
3	STAINLESS STEEL	MOUNTING AREA : Ni0.5 μ m+Sn1 μ m	10	SWC	Ni3 μ m
2	COPPER ALLOY	CONTACT AREA : Ni2 μ m+Au0.2 μ m MOUNTING AREA : Ni2 μ m+Au0.03 μ m	7, 8, 9	STAINLESS STEEL	CONTACT AREA : Ni2 μ m+Au0.2 μ m MOUNTING AREA : Ni2 μ m+Au0.03 μ m
1	LCP	BLACK UL94V-0	4	LCP	BLACK UL94V-0

UNITS	SCALE	COUNT	DESCRIPTION OF REVISIONS	DESIGNED	CHECKED	DATE
mm	2 : 1	△	APPROVED : KI. AKIYAMA 09.09.15 CHECKED : NH. SUGITA 09.09.15 DESIGNED : HT. SUGIMURA 09.09.14 DRAWN : CR. TAKESHIMA 09.09.14			

DRAWING NO.	PART NO.	CODE NO.
EDC3-153736-07	DM1AA-SF-PEJ(72)	CL609-0004-8-72

Mar.1.2021 Copyright 2021 HIROSE ELECTRIC CO., LTD. All Rights Reserved.
 In case of consideration for using Automotive equipment / device which demand high reliability, kindly contact our sales window correspondents.

CONFIGURATION OF PACKING TRAY



NOTE 1. QUANTITY : 48PCS./TRAY

2	CONNECTOR:DM1AA-SF-PEJ(72)
1	PS CLEAR
NO.	MATERIAL

HRS	DRAWING NO.	EDC3-153736-07
	PART NO.	DM1AA-SF-PEJ(72)
	CODE NO.	CL609-0004-8-72
		△ 2/2