

## SPECIFICATIONS

### Electrical

Current Rating: 1A AC, DC

Voltage Rating: 125V AC/ max.

Operating Temp.: -40°C ~ +85°C

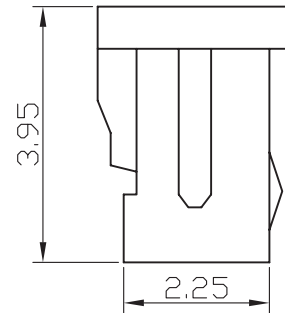
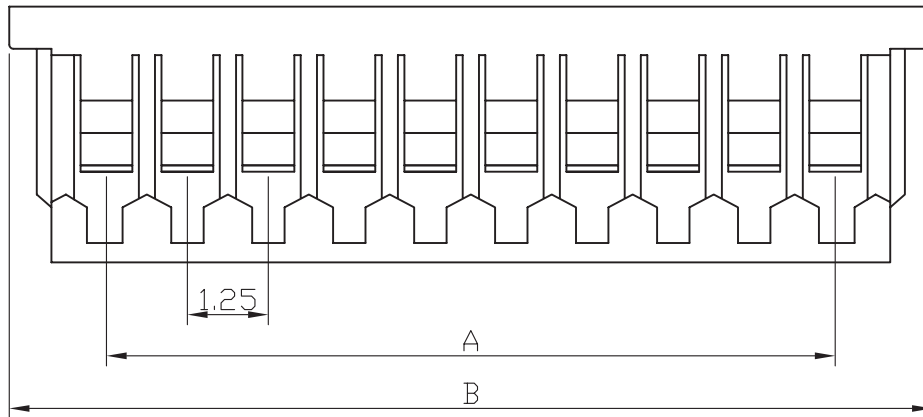
Insulation Resistance: 100MΩ/ min.

Dielectric Withstanding Voltage: 250V AC/ min.

Contact Resistance: 20MΩ/ max.

### Material

Material: Nylon66, UL94V-0



Poles	Dimension mm	
	A	B
2	1.25	4.25
3	2.50	5.50
4	3.75	6.75
5	5.00	8.00
6	6.25	9.25
7	7.50	10.50
8	8.75	11.75
9	10.00	13.00
10	11.25	14.25
11	12.50	15.50
12	13.75	16.75
13	15.00	18.00
14	16.25	19.25
15	17.50	20.50

**DESCRIPTION:** 1.25mm Wire-to-Board Housing

TOLERANCES ARE

X, ±  
 .X ±  
 .XX ±  
 .XXX ±  
 ANG ±